

CJ1 - CJ3

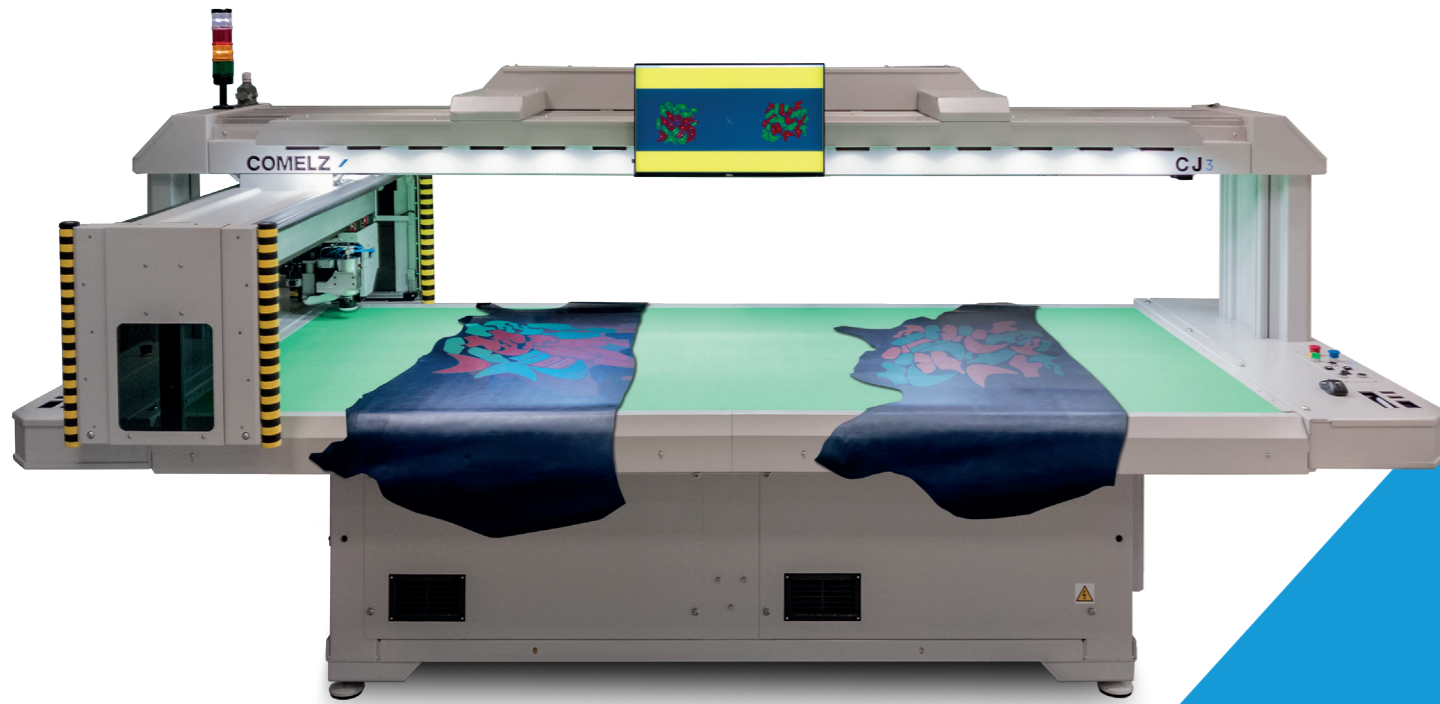
# COMELZ

 THE CUTTING  
EDGE COMPANY

# COMELZ

 THE CUTTING  
EDGE COMPANY

The most innovative fixed table CNC cutting machine  
on the market



### SUSPENDED BRIDGE

The arm that supports the cutting head moves on linear guides applied to a suspended bridge and not to the work table. Therefore, the material that needs to be cut (leather, textile, or other non-rigid materials) can freely extend beyond the edges of the table without the need to be inserted into cradles or small slots.

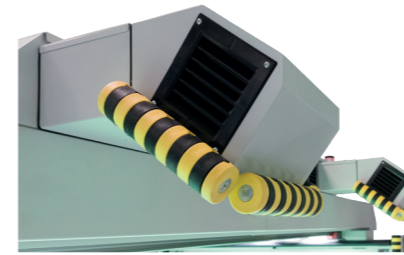
### UNPRECEDENTED SAFETY FEATURES

Fixed table machine where the operator must work next to the cutting devices can create safety related issues. Comelz developed the first machine with triple protection from the cutting devices (two pairs of safety light curtains, a shifting cover and two pivoting plates on the front and the back of the arm).



### VISION SYSTEM (OPTIONAL)

The suspended bridge is the perfect place to support the optional Vision system. Thanks to the Comelz advanced multicamera Vision system, it is possible to perform a: vision-controlled cutting (textile with patterns/logos), final trimming operations and leather digitalization for online automatic nesting..



### PROJECTION

CJ machines can be equipped with regular LCD projectors or with laser projectors (optional). In both cases the projectors are placed on the back of the suspended bridge and therefore the operator body does not interfere with the projection. The projection angle maximizes the light intensity of the projection.



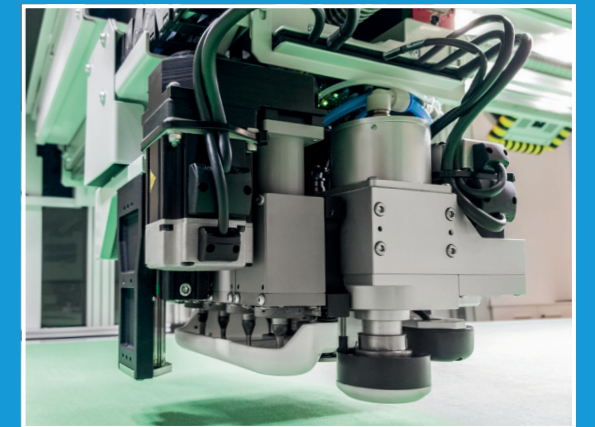
### LIGHTS (OPTIONAL)

The suspended bridge is the perfect place to support the optional LED lighting system. The light intensity can be adjusted manually by the operator or automatically by the software based on the particular operation that is done in a particular area of the work table (part placing, cutting, part collection).

### OTHER FEATURES

The machine, even in the standard configuration, has most of the same state-of-the-art features available on Comelz top of the line machines:

- 7 tool cutting head (high frequency pneumatic knife, 4 independent punching units, pen, pin punch).
- high-end endless screws (in place of more economical drive belts or rack-and-pinion systems).
- micro-partialization system for the vacuum of the cutting area.
- vacuum pump (up to 17.5KW) enclosed in a cooled and sound-proofed area inside the machine
- electronic lubrication system for the cutting unit.
- isolation transformer for protection against most issues on the electric power supply.
- Comelz software for machine control and automatic nesting highly regarded for being user friendly, open, easily interconnected, and scalable.



### TECHNICAL DATA

Work area CJ1 (mm)	1600 x 1000
Work area CJ3 (mm)	3000 x 1000
Cutting speed	60 m/min
Maximum punching frequency	300 p/min
Air supply	150 NL/min a 6 bar
Power supply	3 phase 400V - 50/60 Hz 220V - 50/60 Hz (optional)
Maximum power consumption	20 KVA

